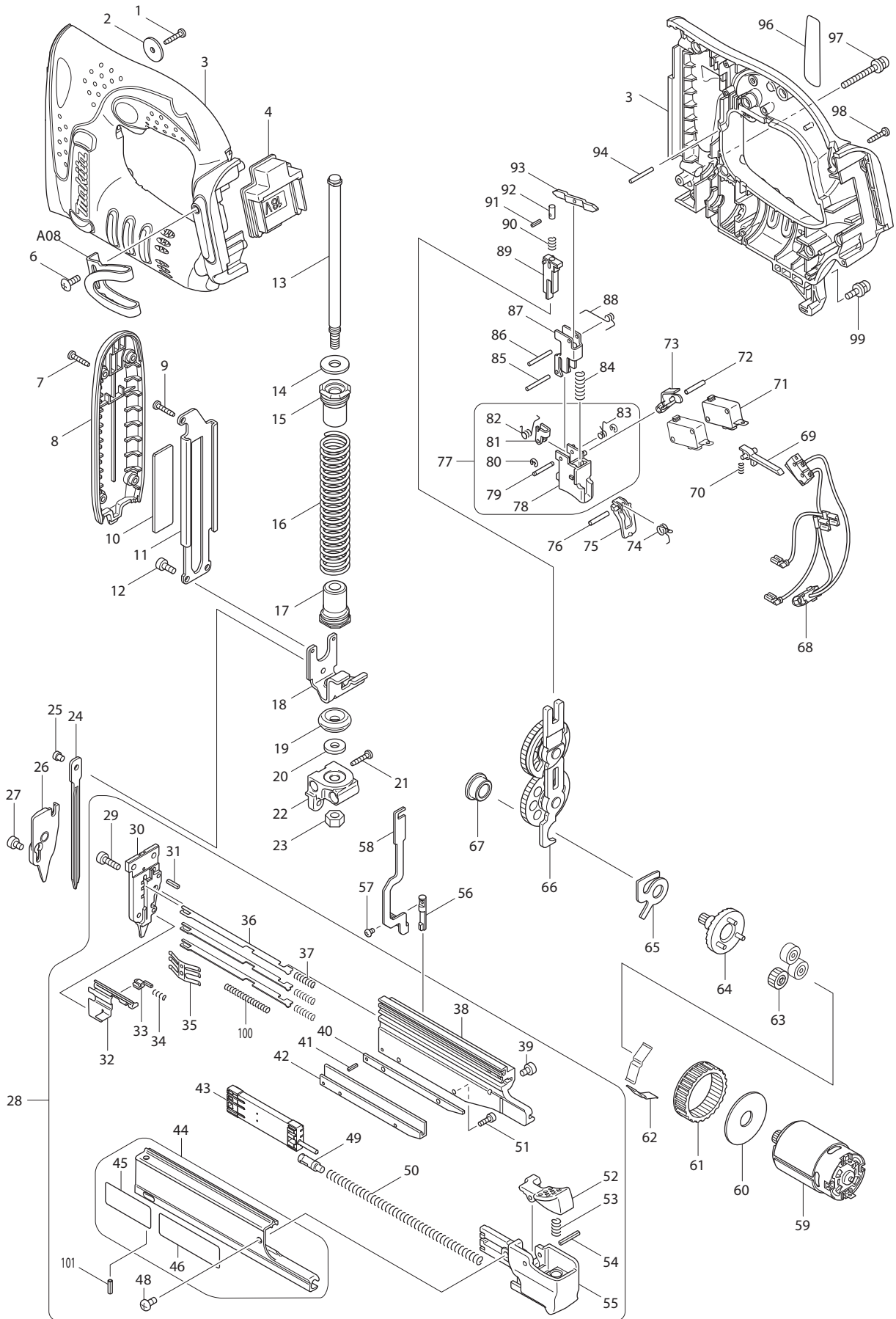




05 - 2014
DPT351F, DPT351RFE, DPT351Z
18V PIN NAILER



Item No	Type	Part No	Description	Qty	Unit
1		266130-9	TAPPING SCREW BIND PT 3X16	1	PC.
2		267071-2	FLAT WASHER 4	1	PC.
3		187098-5	HOUSING SET	1	SET
4		643843-3	TERMINAL	1	PC.
6		251314-2	+ SCREW M4X12 (F/ Item No. 9 TOOL HOOK)	1	PC.
7		266130-9	TAPPING SCREW BIND PT 3X16	4	PC.
8		419450-2	FRONT COVER	1	PC.
9		266130-9	TAPPING SCREW BIND PT 3X16	1	PC.
10		345704-0	UPPER PLATE	1	PC.
11		345703-2	RAIL	1	PC.
12		922112-8	HEX. SOCKET HEAD BOLT M4X10	2	PC.
13		324683-5	GUIDE BOLT	1	PC.
14		253762-1	FLAT WASHER 8	1	PC.
15		421962-3	SPRING HOLDER	1	PC.
16		233472-6	COMPRESSION SPRING 17	1	PC.
17		421962-3	SPRING HOLDER	1	PC.
18		345701-6	HAMMER	1	PC.
19		421956-8	CUSHION	1	PC.
20		253804-1	FLAT WASHER 6	1	PC.
21		266130-9	TAPPING SCREW BIND PT 3X16	1	PC.
22		318025-3	HOLDER	1	PC.
23		931302-2	HEX. NUT M6	1	PC.
24		345702-4	DRIVER	1	PC.
25		268157-5	PIN 4	1	PC.
26		168430-2	DRIVER GUIDE COVER	1	PC.
27		922102-1	HEX. SOCKET HEAD BOLT M4X6	2	PC.
28		135370-9	MAGAZINE ASSEMBLY	1	PC.
28	INC.		Item no. 29-44,48-55,100,101		
29		922122-5	HEX.SOCKET HEAD BOLT M4X14	1	PC.
30		310173-4	DRIVER GUIDE	1	PC.
31		951054-9	SPRING PIN 3-10	2	PC.
32		345699-7	PUSHER	1	PC.
33		310176-8	STOPPER	1	PC.
34		233018-8	COMPRESSION SPRING 3	1	PC.
35		232229-2	LEAF SPRING	1	PC.
36		346239-4	NAIL STOPPER	3	PC.
37		233476-8	COMPRESSION SPRING 4	3	PC.
38		318024-5	MAGAZINE	1	PC.
39		922102-1	HEX. SOCKET HEAD BOLT M4X6	1	PC.
40		345696-3	SPACER	1	PC.
41		951001-0	SPRING PIN 2-8	1	PC.
42		318023-7	LOWER RAIL	1	PC.
43		452877-3	NAIL GUIDE HOLDER	1	PC.
44		140414-2	UPPER RAIL COMPLETE	1	PC.
44	INC.		Item no. 45,46		
45		810310-5	CAUTION LABEL (ENG)	1	PC.
46		810311-3	CAUTION LABEL (FR)	1	PC.
48		911113-1	PAN HEAD SCREW M4X10	1	PC.
49		419443-9	SHOULDER PIN 5-7	1	PC.
50		233470-0	COMPRESSION SPRING 5	1	PC.
51		266177-3	HEX. SOCKET HEAD BOLT M3X10	2	PC.
52		419446-3	LEVER	1	PC.
53		233117-6	COMPRESSION SPRING 6	1	PC.
54		951066-2	SPRING PIN 3-18	1	PC.
55		419444-7	SLIDE DOOR CAP	1	PC.
56		268158-3	PIN 5	1	PC.
57		265040-7	+ PAN HEAD SCREW M3X4	1	PC.
58		345705-8	LOCK ARM	1	PC.
59		629910-8	DC MOTOR	1	PC.
60		267053-4	FLAT WASHER 12	1	PC.
61		227166-3	INTERNAL GEAR 69	1	PC.

Item No	Type	Part No	Description	Qty	Unit
62		232230-7	LEAF SPRING	2	PC.
63		221961-3	SPUR GEAR 27	3	PC.
64		154973-0	SPUR GEAR 7 COMPLETE	1	PC.
65		345773-1	ANTI BACK PLATE	1	PC.
66		154972-2	SPUR GEAR 55 COMPLETE	1	PC.
67		214060-8	PLANE BEARING 10	1	PC.
68		620073-3	LED CIRCUIT	1	PC.
69		419452-8	LIGHT SWITCH ARM	1	PC.
70		233032-4	COMPRESSION SPRING 2	1	PC.
71		651891-8	SWITCH V-15-3A6	2	PC.
72		256299-7	PIN 3	1	PC.
73		419453-6	LINK PLATE	1	PC.
74		231693-4	TORSION SPRING 4	1	PC.
75		419454-4	SAFETY TRIGGER	1	PC.
76		256299-7	PIN 3	1	PC.
77		188168-3	TRIGGER SET	1	PC.
77	INC.		Item no. 78-83		
78		419451-0	TRIGGER	1	PC.
79		256771-9	PIN 2.5	1	PC.
80		257926-9	STOP RING E-2.0	2	PC.
81		345707-4	SWING ARM	1	PC.
82		231694-2	TORSION SPRING 3	1	PC.
83		231695-0	TORSION SPRING 3	1	PC.
84		233360-7	COMPRESSION SPRING 4	1	PC.
85		256176-3	PIN 2.5	1	PC.
86		256176-3	PIN 2.5	1	PC.
87		345706-6	GUIDE PLATE	1	PC.
88		231692-6	TORSION SPRING 4	1	PC.
89		168489-9	CAM BLOCK	1	PC.
90		233188-3	COMPRESSION SPRING 2.4	1	PC.
91		951001-0	SPRING PIN 2-8	1	PC.
92		324923-1	PUSH PIN	1	PC.
93		345708-2	SWITCH ARM	1	PC.
94		256176-3	PIN 2.5	1	PC.
96		815W07-9	NAME PLATE F/DPT351	1	PC.
97		911163-6	PAN HEAD SCREW M4X35	1	PC.
98		266130-9	TAPPING SCREW BIND PT 3X16	8	PC.
99		911123-8	PAN HEAD SCREW M4X14	2	PC.
100		233459-8	COMPRESSION SPRING 3	1	PC.
101		951054-9	SPRING PIN 3-10	1	PC.
D01		654069-2	RECEPTACLE	1	PC.
D02		654079-9	INSULATED RECEPTACLE DF1.25	2	PC.
D03		654108-8	RECEPTACLE STO-41T-187N	1	PC.

ACCESSORIES

A01		195246-2	SAFETY GOGGLE	1	PC.
A02		419525-7	NOSE ADAPTER	1	PC.
A03		783201-2	HEX. WRENCH 3	1	PC.
A04		141932-3	PLASTIC CARRYING CASE COMPLETE	1	PC.
	INC.	324667-3	SHAFT	1	PC.
	INC.	413098-2	PLATE	4	PC.
	INC.	417724-5	LATCH	2	PC.
	INC.	419215-2A	PLASTIC CASE LID	1	PC.
	INC.	419216-0	HANDLE	1	PC.
A05		804J83-0	DPT351RFE PLASTIC CASE LABEL	1	PC.
A06		-----	BATTERY CHARGER		
A07		-----	18V LI-ION BATTERY		
A08		-----	LI-ION BATTERY ACCESSORIES		